

ULTRALIFT LIFTING MAGNETS



Magnetic lifters are quicker, easier and safer to use than slings, chains, hooks and grabs, and do not mark the load. Onboard switching and permanent magnet technology mean installation and operation could not be easier and running costs are non-existent. Access is only required to the load's top face, allowing for more efficient storage and handling.

Ultralift^{plus}

The World's Safest Lifter

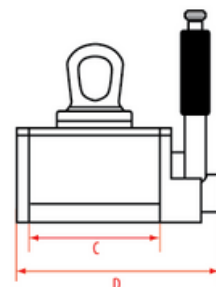
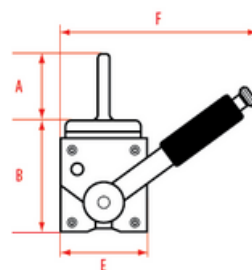
3 Safety Features

- Locking switch handle mechanism
- Unique 'Safety Shim': pre-test any load to ensure a 3:1 safety factor
- Locking eye mechanism: magnet cannot be switched off while holding a load



The patented 'safety shim' allows pre-testing of the load to be lifted, irrespective of weight, material type, material thickness and surface condition. If the load passes, a 3:1 safety factor is guaranteed.

Product No.	UK Product No.	Self Weight	Dimensions						Material Length Max	Flat Section		Round Section	
			A	B	C	D	E	F		WLL	Thickness Min	WLL	Diameter Max
Imperial	Metric	lb	inches						inches	lb	inches	lb	inches
UL0275+	UL0125+	8.8	2.5	2.9	4.0	6.1	2.7	6.0	60	275	0.8	110	8
UL0550+	UL0250+	24.2	3.7	3.8	6.1	8.4	3.6	8.6	60	550	1.0	220	12
UL1100+	UL0500+	59.4	4.8	5.0	8.8	11.8	4.8	10.5	80	1100	1.2	440	16
UL2200+	UL1000+	138.6	5.5	6.9	10.2	14.1	6.9	15.4	120	2200	1.8	880	18
UL4400+	UL2000+	345.4	7.7	8.9	14.5	18.8	9.2	19.4	120	4400	2.2	1760	24

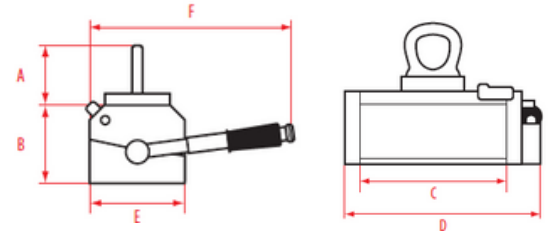


Ultralift **LM**

Safe, General-Purpose Lifting

- Locking switch handle safety mechanism

Product No.	UK Product No.	Self Weight	Dimensions						Material Length Max	Flat Section		Round Section	
			A	B	C	D	E	F		WLL	Thickness Min	WLL	Diameter Max
Imperial	Metric	lb	inches						inches	lb	inches	lb	inches
LM0275	LM0125	9.9	2.1	2.4	4.3	5.9	3.0	5.9	60	275	0.8	110	10
LM0550	LM0250	18.7	3.0	2.8	6.5	8.3	3.5	7.9	60	550	1.0	220	12
LM1100	LM0500	38.5	4.1	3.5	8.9	11.1	4.2	9.6	80	1100	1.2	440	16

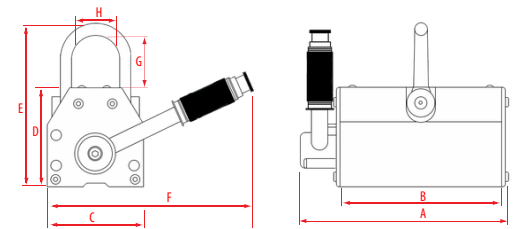
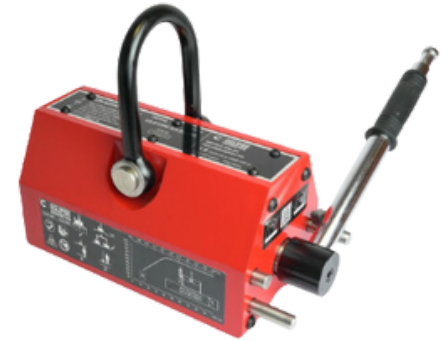


Ultralift **E**

Cost-Effective, High Performance

- Locking switch handle safety mechanism

Product No.	UK Product No.	Self Weight	Dimensions								Flat Section			Round Section	
			A	B	C	D	E	F	G	H	WLL	Thickness Min.	Length Max	WLL	Diameter Max
Imperial	Metric	lb	inches								lb	inches	inches	lb	inches
ULE0220	ULE0100	6.7	5.2	3.6	2.6	3.0	4.9	7.3	1.8	1.3	220	0.6	39.3	110	3.1
ULE0660	ULE0300	22.1	8.0	6.2	3.7	3.7	6.7	10.0	2.5	1.8	660	0.8	59.0	330	3.9
ULE1320	ULE0600	50.7	11.1	9.8	4.7	4.6	8.7	11.0	3.5	2.4	1320	1.2	78.7	660	5.5
ULE2200	ULE1000	86.0	13.8	12.1	5.4	5.5	10.6	12.2	4.3	3.1	2200	1.6	98.4	1100	7.0
ULE4400	ULE2000	163.1	17.4	14.9	6.4	6.7	12.2	16.1	4.7	3.6	4400	2.0	118.1	1980	11.8

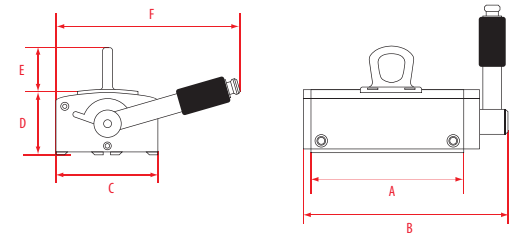


Ultralift **TP**

Thin Plate Lifter

- Specifically designed for the safe lifting of thin plate and pressings, it can lift single sheets from the tops of stacks.

Product No.	UK Product No.	Self Weight	Dimensions						Material Length Max	Material Thickness			
			A	B	C	D	E	F		0.20 inches	0.25 inches	0.30 inches	0.40 inches
Imperial	Metric	lb	inches						inches	WLL	WLL	WLL	WLL
TP330	TP150	18	6	8	4	3	3	7	60	165	220	330	440
TP660	TP300	33	12	14	4	3	3	7	80	330	440	660	880



Service & Maintenance

Full Inspection and Certification

All lifting systems should be serviced every 12 months by a competent person. Our fully trained personnel provide a full inspection and certification service. Please refer to manual guidelines for inspection requirements.

WE WESTERN EQUIPMENT LTD. 
100% CANADIAN OWNED & OPERATED SINCE 1947

5219 192 St #114, Surrey, BC V3S 4P6
info@westernequipmentltd.com
www.westernequipmentltd.com